

## **CAPT Meeting Minutes March 29, 2018**

**Present:** John Laskowski, Tom Teper, Tom Habing, Bill Mischo, Lynn Wiley, MJ Han, Jim Dohle

**Absent:** Susan Avery, Michael Norman, Cherie' Weible, Kyle Rimkus,

### **Agenda and Minutes**

Tom Teper opened the meeting requesting approval of the March agenda and February minutes. Agenda and minutes were unanimously approved.

### **Quarterly Working Group Reports**

**Cataloging and Metadata – MJ Han– Report Attached**

**Electronic Resources – Lynn Wiley – Report Attached**

**LEITC – Jim Dohle – Report Attached**

### **Web Group Member Process**

John shared statements of interest from eight people interested in volunteering for the Web group. The members agreed that all were good candidates, but they had to narrow it down to four. The four new members are Piper Martin, Lisa Hinchliffe, Lynne Rudasill, and Kate Lambaria.

### **Other Updates**

Susan Avery asked to be removed from CAPT to focus efforts elsewhere. The committee approved this request.

**Cataloging and Metadata Group**  
**2018 1st Quarter Report**  
**March 29, 2018**  
**Submitted by Myung-Ja K. Han**

1. **Serials Summary Holdings Statement:** The serials summary note is important because it provides users with accurate coverage/holdings information in both VuFind and WorldCat environments that will also impact ILL activities. The Library has over 400,000 print serials records, and prior to January 2018 there were 217,000 records that did not have summary statements. Since then, we have added serials summary holdings statements to the MFHD of each serial title. About 105K MFHD have had summary notes added by batch mode (by Jamie Carlstone) and the Serials team has been manually adding the summary notes to MFHD that have irregular publication patterns.

Tag	I1	I2	Subfield Data
852	1		#b mtX-nc #h 310.6 #i INRZ #t 1 #z For later volumes see 310.6INS #x (Marked by v.)
853	2	3	#8 1 #a v. #i (yr.)
866	4	0	#8 1 #a v.1(1933)-v.14(1946),v.18:no.3(1950)-v.19:no.3(1951),v.21(1953)-v.22(1954),v.24(1956)-v.39(1971)
863	4	0	#8 1.5000 #a 39 #i 1971
863	4	0	#8 1.5002 #a 38 #i 1970
863	4	0	#8 1.5004 #a 37 #i 1969
863	4	0	#8 1.5006 #a 36 #i 1968
863	4	0	#8 1.5008 #a 35 #i 1967
863	4	0	#8 1.5010 #a 34 #i 1966
863	4	0	#8 1.5012 #a 33 #i 1965
863	4	0	#8 1.5014 #a 32 #i 1964
863	4	0	#8 1.5016 #a 30-31 #i 1962-1963
863	4	0	#8 1.5018 #a 29 #i 1961
863	4	0	#8 1.5020 #a 27-28 #i 1959-1960
863	4	0	#8 1.5022 #a 24-26 #i 1956-1958
863	4	0	#8 1.5024 #a 21-22 #i 1953-1954
863	4	0	#8 1.5026 #a 19:1-3 #i 1951
863	4	0	#8 1.5028 #a 18:3-4 #i 1950
863	4	0	#8 1.5030 #a 16 #i 1948
863	4	0	#8 1.5032 #a 9-14 #i 1941-1946
863	4	0	#8 1.5034 #a 7-8 #i 1939-1940
863	4	0	#8 1.5036 #a 5-6 #i 1937-1938
863	4	0	#8 1.5038 #a 4 #i 1936-1937
863	4	0	#8 1.5040 #a 3 #i 1935

2. Under Discussion

- a. **Policy on Local Information in Catalog Record:** Local notes can include many different things, such as physical characteristics, collection title, purchase information, etc. Library has been using many different ways to add those notes. CMWG will review and develop a new policy on this.
- b. How to utilize catalog records in VuFind.
- c. How to prepare catalog records in their best form before migration to a new system (catalog record, acquisition data, circulation data).

## CAPT ERWG Report March 2018

Date : March 29, 2018

By: Lynn Wiley, chair CAPT ERWG submitted April 9 2018

ERWG has met once since the last report on January 24<sup>th</sup>. We met on February 1, 2018 and will meet again next week on April 5<sup>th</sup>.

The group has now moved the entire vendor platform usernames passwords database to BOX for more security. Many members of ERWG use the database that includes a lot of information per vendor on needed tools for online resource management. Notable are: The URLs for admin work and usernames/Passwords to provide access to accomplish critical tasks. The tasks include:

Activate access, set up IPs, retrieve holdings for clean list of titles (helpful in SFX work), to retrieve use statistics, implement branding for the UI on the vendor website Notes on vendor limitations and or contacts are also input there. The Box move works fine as members can open the list simultaneously and update without loss of access or data. So far so good. Thank you Esra!

Acquisitions is now working with ERWG team to report on a quarterly basis the new major online purchases. The website highlights them and LON will cover them. Typically, these are databases, as was the case last quarter but may be archival collections/journal backfiles as well as purchased in the future. Single journals or ebooks are not noted due to the high volume of purchases.

ERWG worked to provide for a smooth transition to Safari that is ongoing with both platforms still operating for now. Statistics are being collected and public service desk apprised of updates.

New books adds continue with Chris adding as many ebook collections as possible to help match to the book store lists of required texts. Some ebooks will overlap with those texts and will be highlighted in a Collections Office guide drafted later in the year.

Jon Gorman has proving regular updates on identify management to ERWG that is extremely helpful for authentication purposes and covered Shibboleth/EZProxy updates. He for example will alert all to new EZproxy versions and when they should be implemented. We have had a large number of changes there with vendors not always setting things up correctly or updates that need to be configured on our end as well. New vendors are problematic as are some cases when vendors change from old platforms to new ones. Jon also fields questions about who has access to online resources and will work with ERWG on a basic review of campus identities, NETIDs and visiting students or scholars to help those assisting users understand whop can get remote access to online sources. Anyone can use the public workstations to access 99% of all material owned or subscribed to by the Library.

Piper Martin is now providing ERWG with RIS updates and vice versus. A smaller group of members met with RIS to review the resources cycle and troubleshooting and to plan for GA orientations, potential Forums and any training as RIS would like to add in the near future.

Jay Heldreth was a guest at the ERWG Feb 1 meeting to provide to all an overview of Easy Search and in particular, how the EBSCO EDS works to return more results from the EBSCO products. This was a very welcome and helpful presentation. The work has provided for much easier access to our online resources. Piper especially appreciated the overview and we would like to see more offered to all public service staff in the future. It is a wonderful resource and a good understanding of how it works would inform many in their work.

ERWG discussed online serial cancellation projects and work needed to track and deactivate titles but also to summarize holding's we retain for the serial online record (and a plan to check for those holdings post cancel). Right now notes are

in the 852 z. A study of notes, the where and when will be done by for the CAPT metadata and Cataloging group for a future recommendation... A cancelled title will be noted with the text:

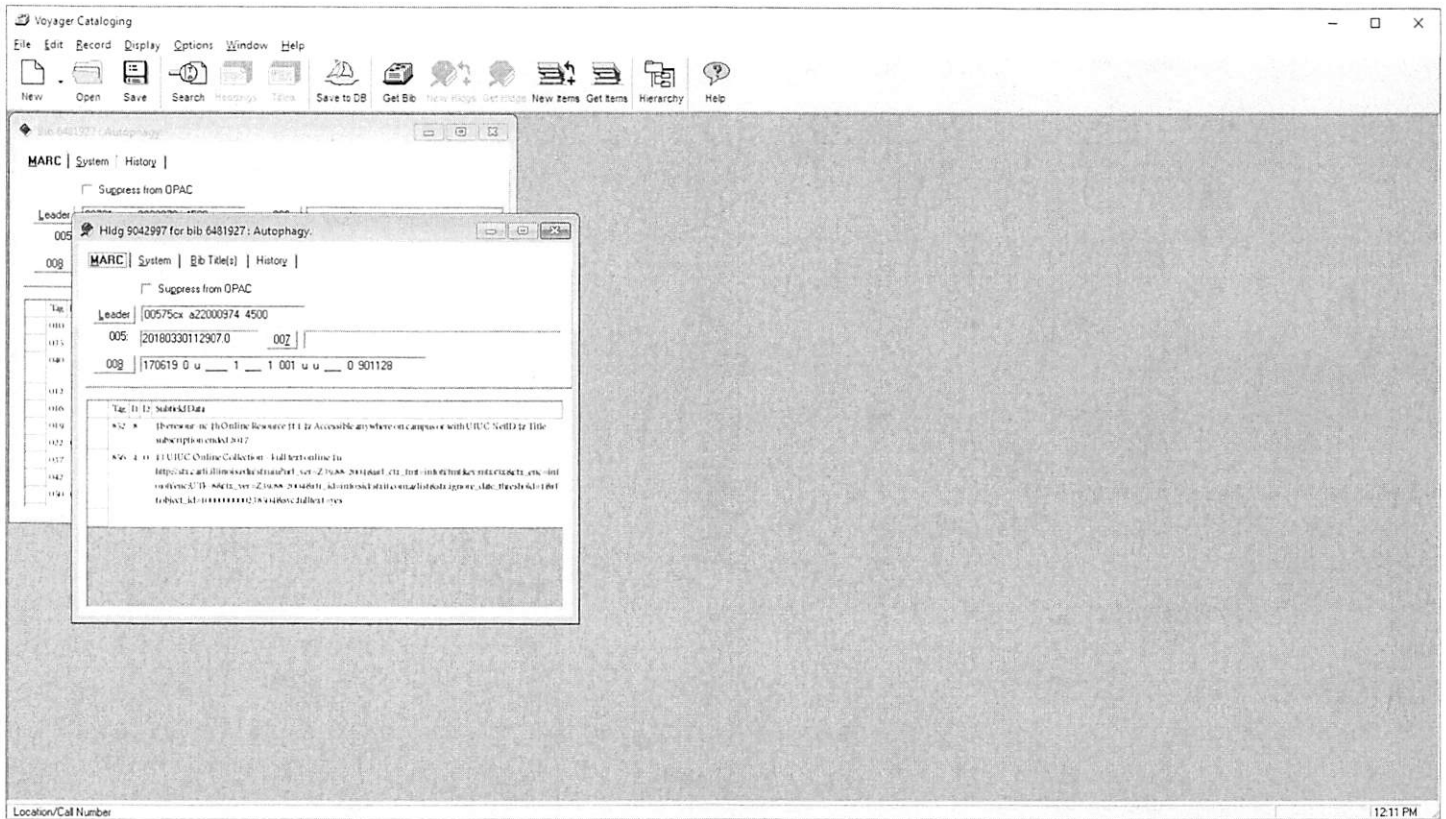
*Title subscription ended with (year)*

As below:

The screenshot shows the University of Illinois at Urbana-Champaign Library Catalog interface. At the top, there are several browser tabs open, including 'Social Work Reference...', 'Library Resource Find...', 'Full Text & Linking Ser...', 'Watch Union Maids n...', '(45) Chris Hannauer', 'Video Game Addition...', 'BTAA Kanopy Interest...', and 'Big Ten'. The browser address bar shows 'https://catalog.library.uiuc.edu/Record/04491967'. The library logo and name 'UNIVERSITY LIBRARY UNIVERSITY OF ILLINOIS AT URBANA-CHAMPAIGN Library Catalog' are prominently displayed. Below the logo, there are links for 'What happened to the Library Catalog?' and 'Tell us what you think of the Library Catalog'. A search bar is present with a 'Keyword' dropdown, a 'Local Catalog Only' dropdown, and a 'Find' button. To the right of the search bar are links for 'Login' and 'Feedback'. Below the search bar, there are links for 'Advanced Search | Classic Search | Course Reserves | Search History'. The main content area shows the record for 'Autophagy'. It includes a 'Back to Search Results' link, 'Cite this', 'Email this', 'Add to favorites', and 'Staff view' options. The record details are as follows: Published: Vol. 1, issue -Vol. 10, issue 10 : [Georgetown, TX] : Landes Bioscience, [2005]-Vol. 10, issue 11- : [Philadelphia, PA] : Taylor & Francis Group, LLC; Topics: Cell death - Periodicals. | Apoptosis - Periodicals. | Homeostasis - Periodicals. | Autophagic vacuoles - Periodicals. | Lysosomes - Periodicals. | Autophagy. | Cell Death. | Autophagy. | Homeostasis. | Lysosomes.; Genres: Periodicals.; Online Access: UIUC Online Collection - Full text online; Tags: No Tags, Be the first to tag this record! Below the record details are four tabs: 'More Details', 'Location & Availability', 'User Reviews', and 'Request Item'. The 'Location & Availability' tab is selected, showing the following information: University of Illinois at Urbana-Champaign; Discover Full Text; Location: \*UIUC Online Collection; Call Number: Online Resource; Text me this call number; Copy: 1; Notes: Accessible anywhere on campus or with UIUC NetID; Title subscription ended 2017; Online Access: UIUC Online Collection - Full text online. At the bottom of the page, there is another search bar with 'Keyword', 'Local Catalog Only', and 'Find' buttons, and links for 'Advanced Search | Classic Search | Course Reserves | Search History'.

Chris is gearing up for the Jan-Dec renewals cycle to push out more assessment and overlap data if needed.

The July cycle awaiting a review by bibliographers but there were only 70 titles from that over 250 title list that were online (and that then have COUNTER stats) .



Eserials records management is ongoing. Jamie worked with us to redo serial records to reduce problems where titles overlap. A multiple MHFDS trial approach is now being replaced with a new model: We had been implementing the one record for online serial title model with one MHFHD and one link with SFX dates for all overlaps. Maintaining the serial title overlaps was too confusing so the MFHD now points to a generic Collection i.e. UIUC Online Collection. The open URL link will bring a user to the SFX Target display with thresholds. The current and subscribed to titles will appear before an aggregator (from work done with display logic last year.

Example: History of education quarterly has three sources: the first shows two MFHDS using the old collection name approach: Wiley and JSTOR with the link used showing just the SFX targets for that serial

What happened to the Library Catalog? Tell us what you think of the Library Catalog

Keyword Local Catalog Only Find

Login  
Feedback

Advanced Search | Classic Search | Course Reserves | Search History

Back to Search Results Cite this Email this Add to favorites Staff view

**History of education quarterly.**  
Published: Pittsburgh, Penn. : University of Pittsburgh, 1961-  
Topics: Education - History - Periodicals. | Education - Histoire - Périodiques. | Onderwijs.  
Genres: Electronic journals. | History. | Periodicals. | Periodicals.  
Online Access: UIUC Online Collection - Full text online  
Tags: No Tags, Be the first to tag this record! Add

More Details Location & Availability User Reviews Request Item

University of Illinois at Urbana-Champaign  
**Discover Full Text**  
**Location:** \*UIUC Online Collection  
**Call Number:** Online Resource  
Text me this call number  
**Copy:** 1  
**Notes:** Accessible anywhere on campus or with UIUC NetID  
**Online Access:** Wiley Serials UIUC - Full text  
**Online Access:** JSTOR Serials UIUC - Full text  
  
**Location:** \*UIUC Online Collection  
**Call Number:** Online Resource  
Text me this call number  
**Copy:** 1  
**Notes:** Accessible anywhere on campus or with UIUC NetID  
**Online Access:** UIUC Online Collection - Full text online



Source: History of Education Quarterly ISSN:0018-2280  
Full Text Services  
**Online Full Text**  
Full text available via [Cambridge University Press Journals Complete](#)  
Full text available via [JSTOR Arts and Sciences II](#)  
Full text available via [Wiley Online Library](#)  
**Library Catalog**  
Holdings in [FullText](#)  
**Reference**  
Save Reference in [Citation Style \(MLA, APA, etc.\)](#)  
**Additional Services**

Report a problem  
Powered by [DS](#) and [CrossRef](#)  
Report Link

Now users will see only the generic link for the UIUC online collection and will be directed to a link that shows all threshold dates.

The screenshot shows the University of Illinois at Urbana-Champaign Library Catalog interface. At the top, there are several browser tabs open, including 'Social Work Reference C...', 'Library Resource Finder: L...', 'Watch Union Mads now | ...', '(4) Chris Hanner', 'Video Game Addition EB...', 'STAA Kenopy Interact Ser...', 'Big Ten Academic Alliance', and 'Advanced Search EBSCO...'. The browser address bar shows 'https://catalog.library.uiuc.edu/'.

The main header of the library catalog includes the 'UNIVERSITY LIBRARY' logo and the text 'UNIVERSITY OF ILLINOIS AT URBANA-CHAMPAIGN Library Catalog'. There is also a link for 'ASK A LIBRARIAN'.

Below the header, there are two sections for user feedback: 'What happened to the Library Catalog?' and 'Tell us what you think of the Library Catalog'. A search bar is present with a 'Keyword' dropdown, a 'Local Catalog Only' dropdown, and a 'Find' button. To the right of the search bar are links for 'Login' and 'Feedback'.

The search results section is titled 'History of education quarterly.' and includes the following information:

- Published: Pittsburgh, Penn. : University of Pittsburgh, 1961-
- Topics: Education - History - Periodicals. | Éducation - Histoire - Périodiques. | Onderwijs.
- Genres: Electronic journals. | History. | Periodicals. | Periodicals.
- Online Access: UIUC Online Collection - Full text online
- Tags: No tags. Be the first to tag this record!

Below the search results, there are four tabs: 'More Details', 'Location & Availability', 'User Reviews', and 'Request Item'. The 'Location & Availability' tab is selected, showing the following information:

- University of Illinois at Urbana-Champaign
- Direct Link**
- Location: \*UIUC Online Collection
- Call Number: Online Resource
- Text me this call number
- Copy: 1
- Notes: Accessible anywhere on campus or with UIUC NetID
- Online Access: UIUC Online Collection - Full text online

At the bottom of the page, there is another search bar with the same 'Keyword', 'Local Catalog Only', and 'Find' options, and a link for 'Advanced Search | Classic Search | Course Reserves | Search History'.

In this case there are no aggregator level links, these targets show where content that is owned resides.

Full Text & Linkin... X Library Reso... X Full Text & Li... X Full Text & Li... X Full Text & Li... X Full Text & Li... X Full Text & Li... X Nature Biom... X The Quarterl... X Editorial Boar... X

https://sh.c... illinois.edu/st... url\_ver=239.66-2004&rt\_id=info:si... sbit.com:opac\_856&st... ignore\_date\_threshold=1&rtf.issn=1748-5959

Home Services Get Help About Us  
**UNIVERSITY LIBRARY**  
 UNIVERSITY OF ILLINOIS AT URBANA-CHAMPAIGN  
 Ask A Librarian Contact Us My Library Account

**Discover**  
 full text linking services from the UIUC Library

Source: History of Education Quarterly ISSN:0018-2680

**Full Text Services**

**Online Full Text**

Full text available via [Cambridge University Press Journals Complete](#)  
 GO  
 Available from 2011 volume: 51 issue:1

Full text available via [JSTOR Arts and Sciences II](#)  
 GO  
 Available from 1961 volume: 1 Issue:1  
 Most recent 6 year(s) not available

Full text available via [Wiley Online Library](#)  
 GO  
 Available from 2001 volume: 41 issue:1

**Library Catalog**  
 Holdings in [VuFind](#) GO

**Reference**  
 Save Reference in [Citation Style \(MLA, APA, etc.\)](#) GO

**Additional Services**

[Report a problem](#)  
 Powered by [SFX](#) and [CrossRef](#)  
[Record Link](#)

ERWG reviews platform or database problems at meetings and will continue to notify all via Libnews of problem related to access such as the recent Nexus Uni lack of title resolution with a tip to help users find content needed. (now resolved with a local fix).

Submitted April 9 LW



# CAPT -- LEITC quarterly update

03/29/18

- **Monthly meetings**
  - Last met: February 15, 2018 (Match meeting cancelled due to spring break)
  - Next meeting: April 19, 2018

- **Revisiting working group membership**

Functional Area	Name
Library IT	Dohle (chair)
Media Commons	Kurt (co-chair)
IDEA Lab	Mischo
Library IT / ATG	?
Communications	Murphy
UGL	Ward
Scholarly Commons	Hogenboom or designate
Research and Information Services	Holder or designate
Scholarly Communications Publishing	Green or designate

- Question: soliciting formal/informal participation from campus colleagues? CITL, SC4D
- **Evolving group focus**
  - From project (launch LEITPro) during Fall of 2017 to ongoing working group responsibilities
  - Recurring meeting Agenda
    - Roundtable/updates from groups
    - Strategy
    - Ongoing project updates
    - New projects/ on the horizon
- **Improving Branding**
  - Name change: LEITPro → Library Advanced Technology (LAT) program
    - For use with library internal as well as external communication and advertising
  - Eric Kurt working on a preliminary LAT Website
- **Piloting organizational support**
  - Library IT support group: Advanced Technologies Group (ATG)
    - Currently proposed as a subgroup of Workstation and Network Support (WNS) team with opportunity to be shifted over time
    - Future opportunities for responsibilities and staffing growth

- **Planning for upcoming opportunities in the Library**
  - IDEA Lab – current and future growth
  - Main Library room 220
  - Stacks rebuild
  - Special collections building (UGL)
  
- **Connecting to library and campus information systems**
  - Library Referral DB
  - LibDirectory
  - SC4D database