



# Library Update

9 September 2019

**I** ILLINOIS

# Agenda

- Dean's Update
  - FY20 Budget & Plans
  - Questions & Discussion
- Library Building Project
  - Capital Delivery Process
  - Current Project Status
    - Special Collections Research Center
    - Main Library Programming and Conceptual Design
  - Questions & Discussion



# Dean's Update

- My Commitment to You
- Support Related to the FY20 Budget Request
  - Collection inflation
  - Director, DEI
  - Illinois Distributed Museum
  - Data Science
  - Minimum wage increase, part 1

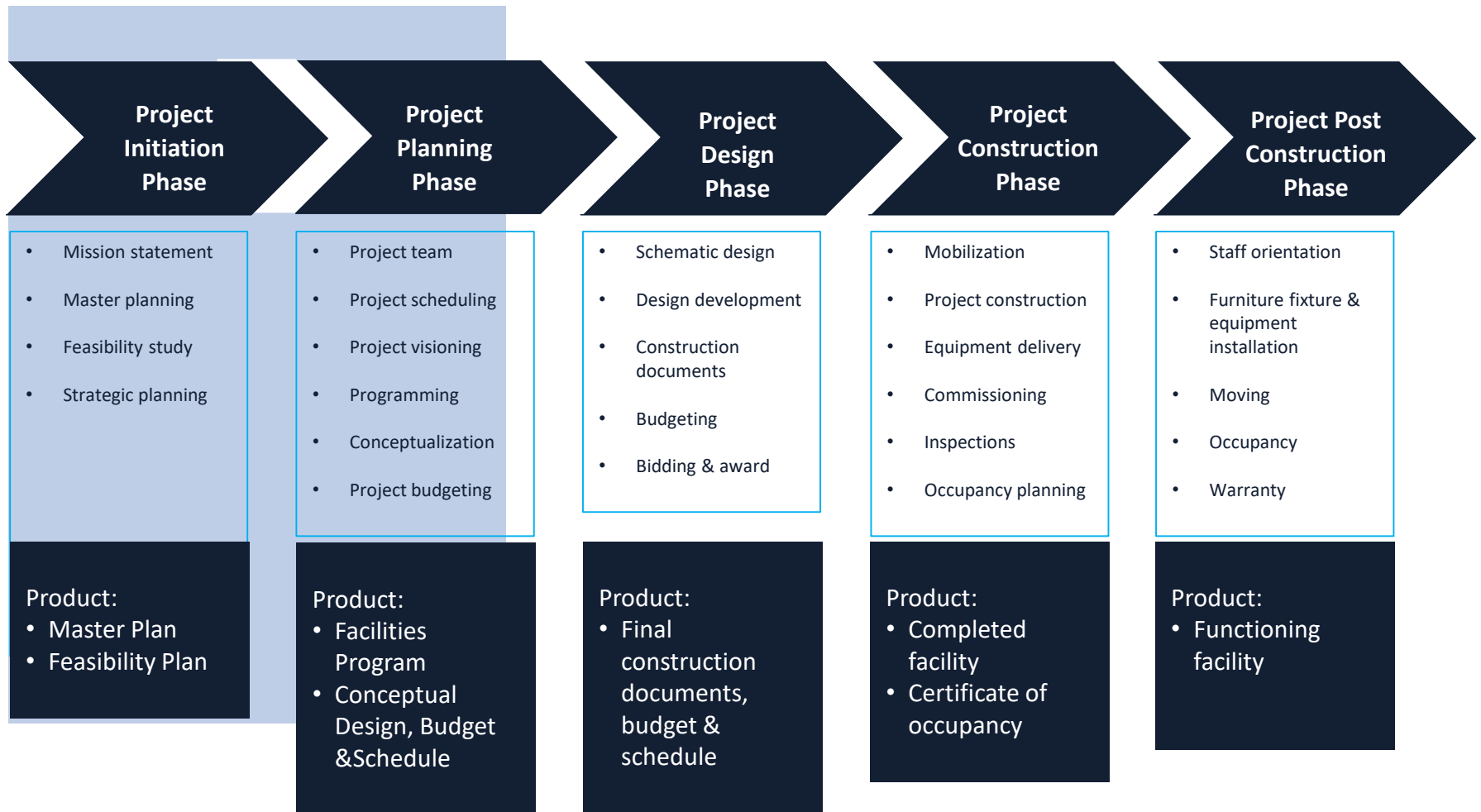


# Dean's Update

- Additional commitments
  - Forgiveness of Oak Street “debt” and use of funds for above
  - Reinforcing campus commitment for building project
  - \$1m toward Room 220
  - Future growth in budget
- Salary program and CMER
- New *strategic* hiring (\$500k) in addition to pre-existing plans/commitments
- Funding for strategic initiatives



# Capital Delivery Process



# Current Status

- Staff Support Activities
  - Wellness Workshops – Thanks to Staff Development and Training Cmte.
  - If there are other things that we can be doing, please let us know.
- Current Project Status – Special Collections Library
  - Kick-off Meeting: June 17, 2019
  - First draft received, comments submitted, and follow-up call held.
  - Revision expected shortly and a Draft report on Part Two expected on 9/25/2019.
- Current Project Status – Main Library
  - Received what is – per feedback submitted – a preferred scheme.
  - Already receiving comments from Library personnel





# Main Library: Visioning, Space Prioritization, and Review

- Three day workshop...
- Project Vision:
  - The Main Library's comprehensive collections and expertise present a wealth of resources that advance UIUC's engagement with the lifecycle of research and creation of knowledge.

The building exemplifies a balance of traditional and emerging ways of working, access to/use of collections, and architecture.

# This environment....

- Supports scholarship in all its forms....
- Effectively connects users to relevant spaces, services, and collections....
- Enables convergence and divergence, addressing a range of needs....
  - Serves individual (research) pursuits....
  - Creates a vibrant hub....
- Provides flexible spaces to adapt and respond to evolving user needs....
- Promotes accessibility and inclusivity with its spaces, people, and resources...







# Scenario: Partner+

- Partner+ Space Characteristics:
  - Individual/private spaces where researchers can work
  - A range of tech-equipped user spaces
  - Flexible event spaces
  - Exhibit spaces
  - Space for more library instruction
  - Blended staff and user space
- Design Principles for Collections
  - Maintain current number of volumes in library
  - Show importance/authority and entice use
  - Enable easy movement and combined use of physical/digital media
  - Highlight the evolving use of physical media

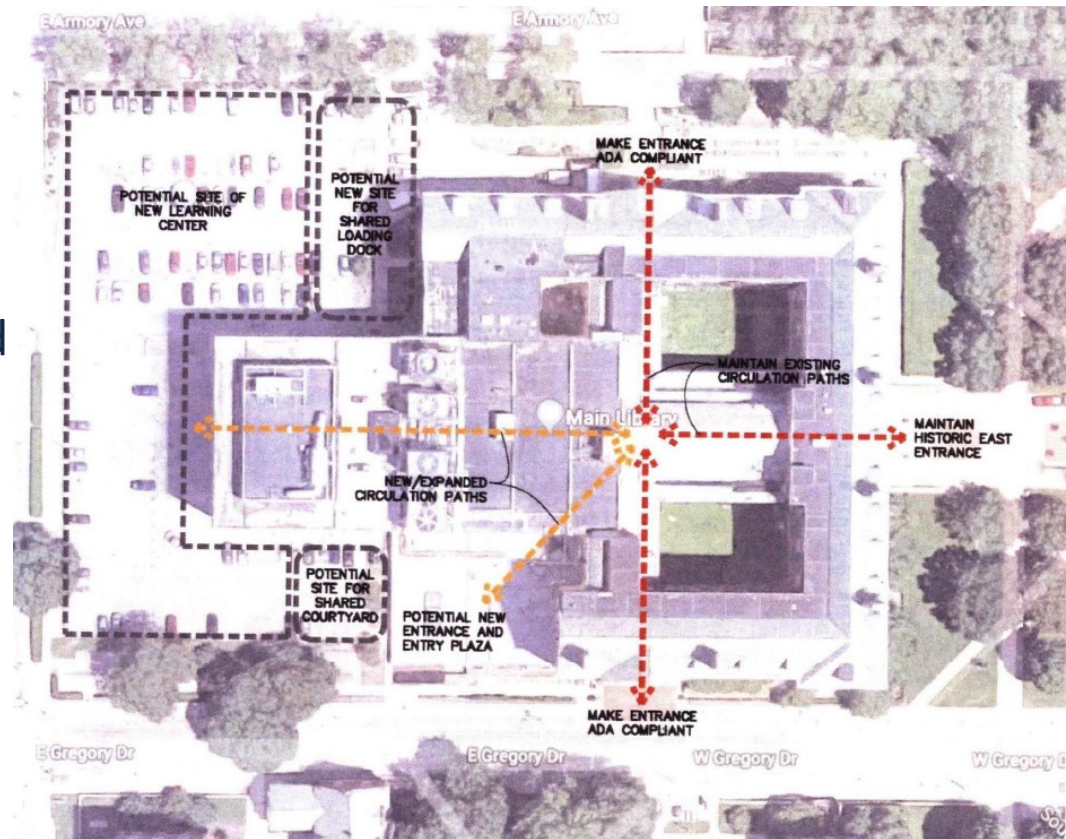


# Scenario: Partner+

- What might we see:
  - Collections
  - Departmental Libraries
  - Learning Center
  - Media Commons
  - Scholarly Center
  - Cooperative Research Commons
  - Graduate Commons
  - An Entry “Hub”
  - Café
  - Flexible Instructional Spaces
  - Collaboration/Hangout Spaces
  - Individual Research Spaces
  - Blended Staff+User Space
  - Collaboration Space

# Initial Document Highlighted Opportunities.... Some Used....

- North/South Passageway
- Circulation Room as “event space”
- ~~New Southwest Modern Entry~~
- Courtyards: Café or Glass roofed event spaces, interior spaces
- 4<sup>th</sup> Floor Destination Space
- Improved Adjacencies and Transparencies
- **Caveat:**
  - The outline of the proposed learning center is all TBD and purely a place holder at this point.

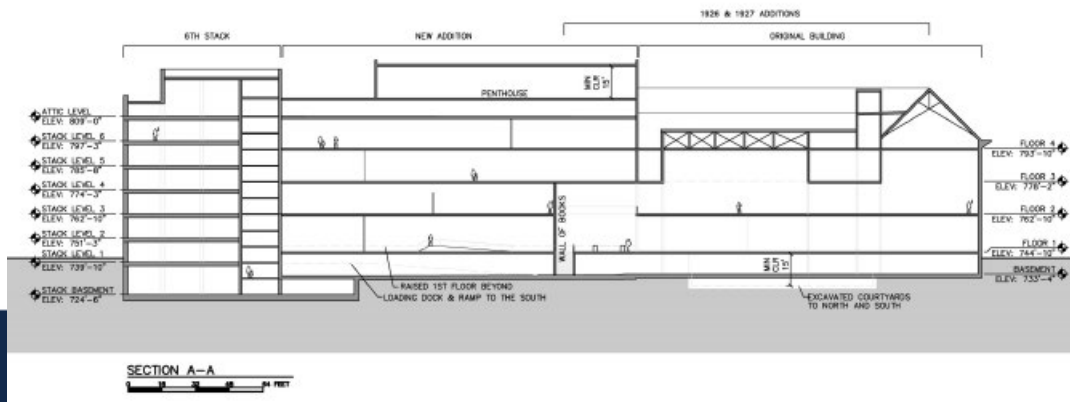
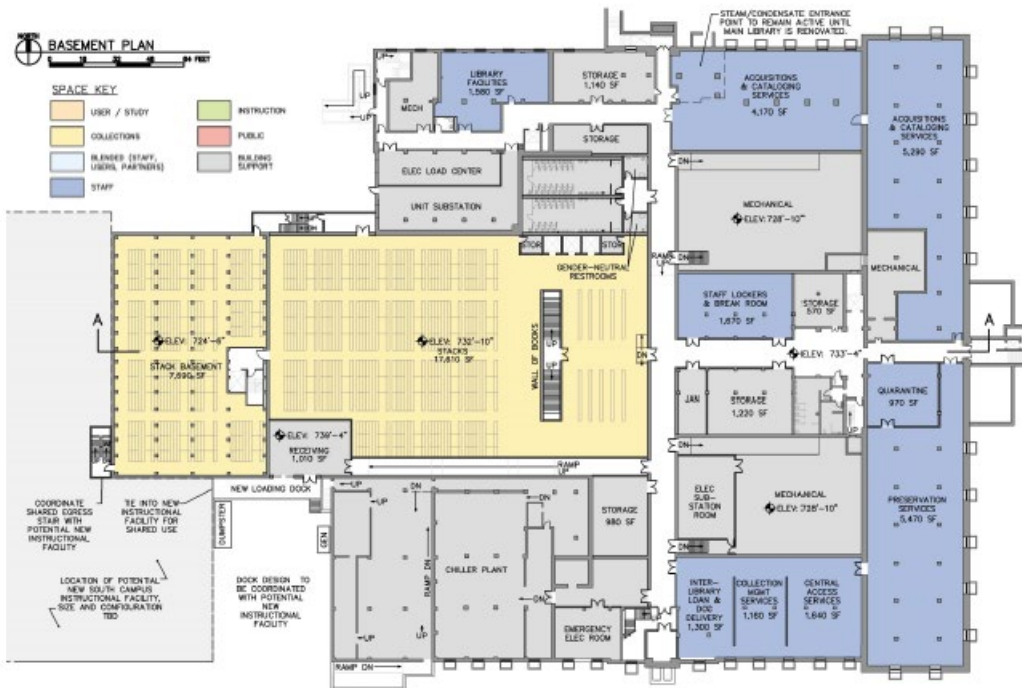




Conceptual sketch, south elevation of the new infill addition.



# Basement & Profile Cut Away



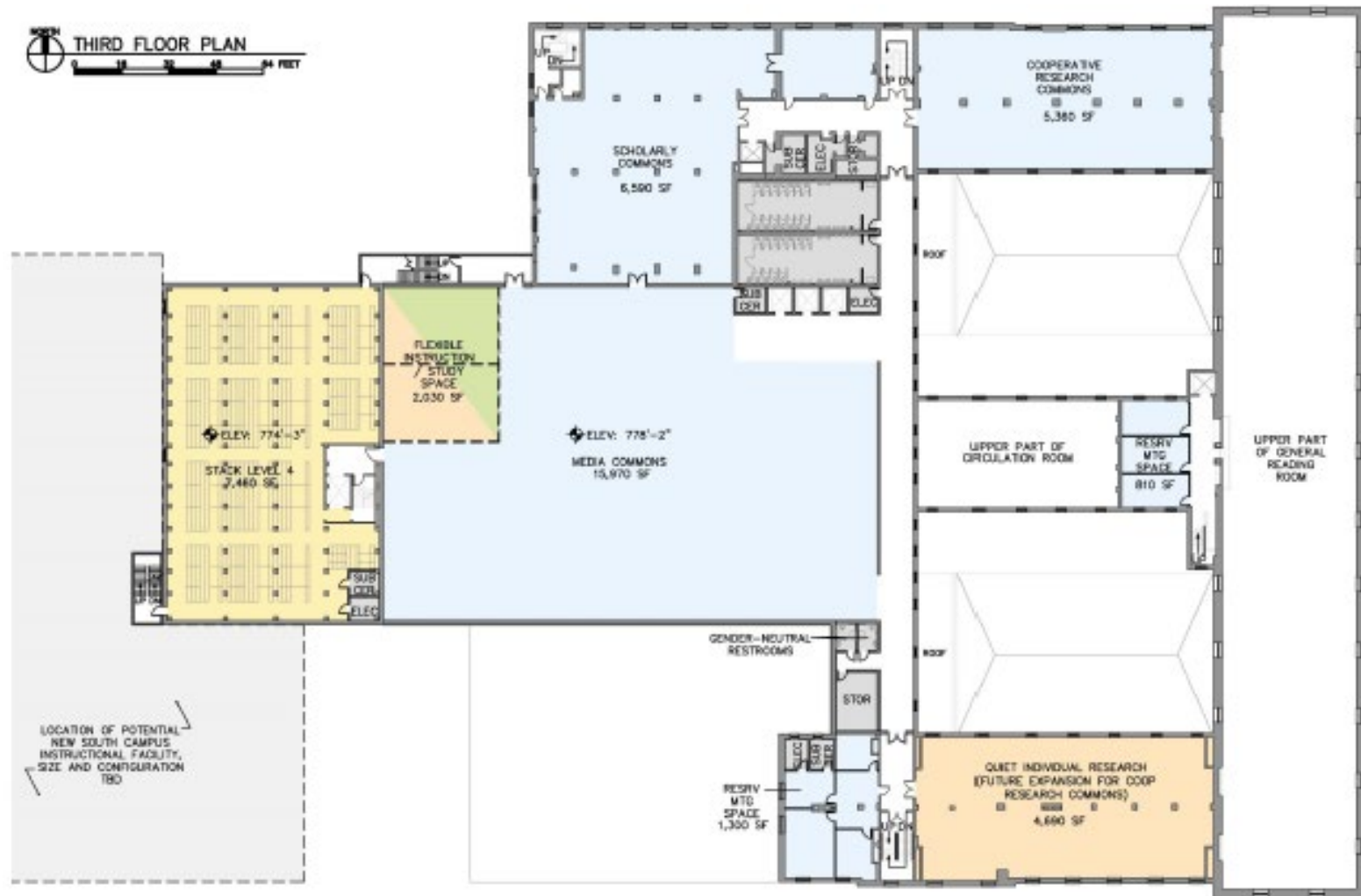
# First Floor



# Second Floor

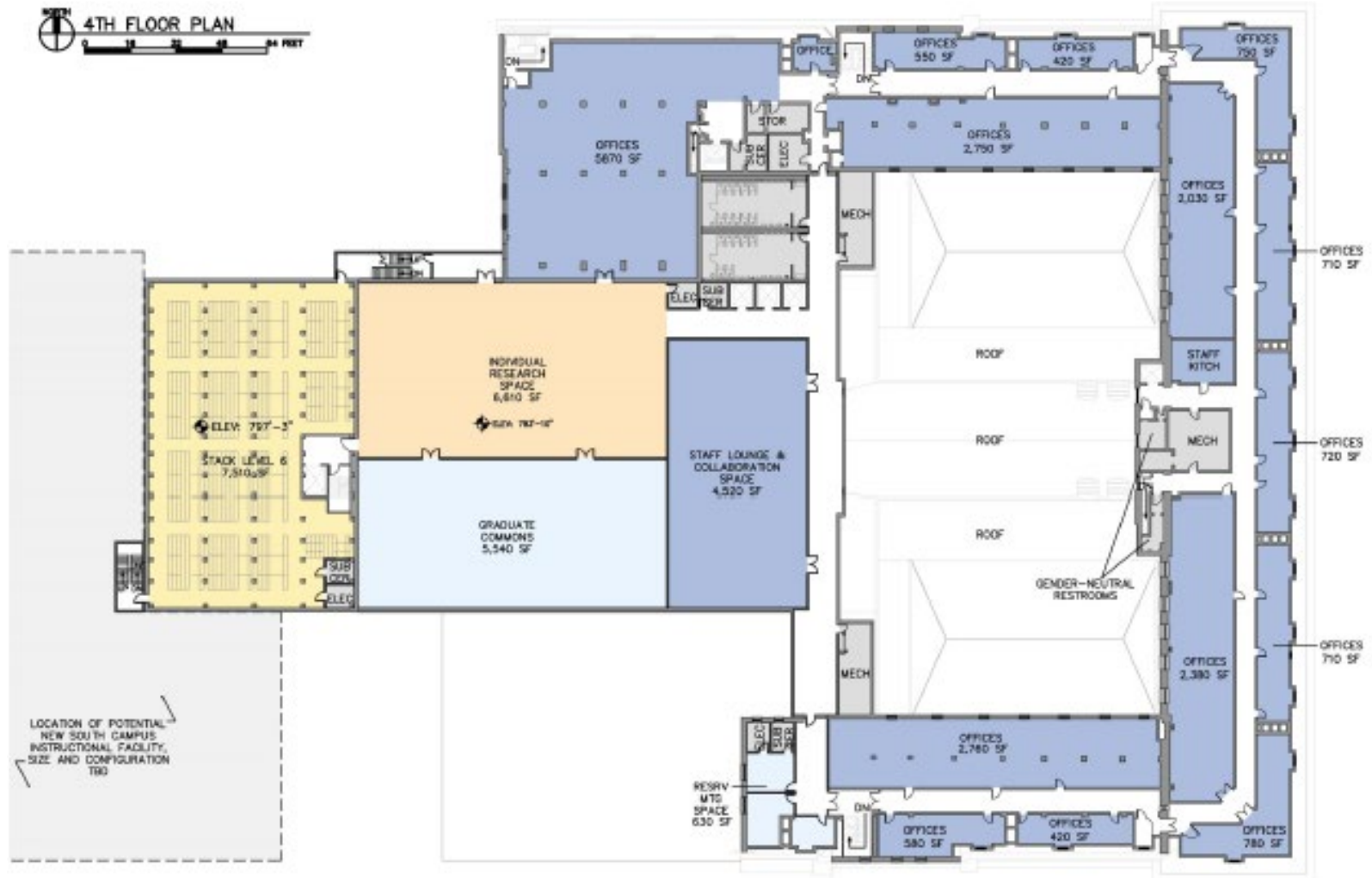


# Third Floor





# Fourth Floor



# Questions and Discussion...

- Discussion/Questions?