

# Main Stacks 6E A13

File: MAIN STACKS 6E A13

Start Date 4/5/2006

End Date 6/30/2006

## Room Conditions

|                                   |                                  |
|-----------------------------------|----------------------------------|
| <b>Temperature is WARM</b>        | <b>Average temperature: 82 F</b> |
| Temp variation is MODERATE        | T Variation: +/- 5 F             |
| RH is MODERATE                    | Average RH: 27%                  |
| RH variation is SLIGHT            | RH Variation: +/- 5%             |
| <b>Natural aging rate is FAST</b> | <b>TWPI: 33 years</b>            |
| Mold risk is NONE                 | Mold Risk Factor: 0.00           |

## General Alerts

WARM Average Temperature  
FAST Natural aging rate

## General Recommendations

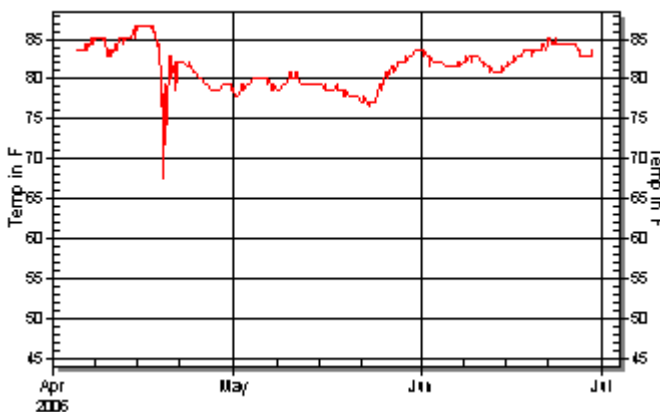
Reduce Average Temperature to 24 C (75 F) or below.  
Identify and minimize periods of high Temperature.

## Collection Materials

|  | <b>MATERIAL</b>      | <b>ALERT LEVEL</b> | <b>REASON FOR ALERT</b> |
|--|----------------------|--------------------|-------------------------|
|  | Paper                | RED                | (Aging rate; Temp)      |
|  | Bound books, leather | YELLOW             | (Temp; Aging rate)      |
|  | Cloth-bound books    | YELLOW             | (Temp; Aging rate)      |
|  | Newsprint            | YELLOW             | (Temp; Aging rate)      |

## Graphs of Room Conditions

Temperature



Relative Humidity

