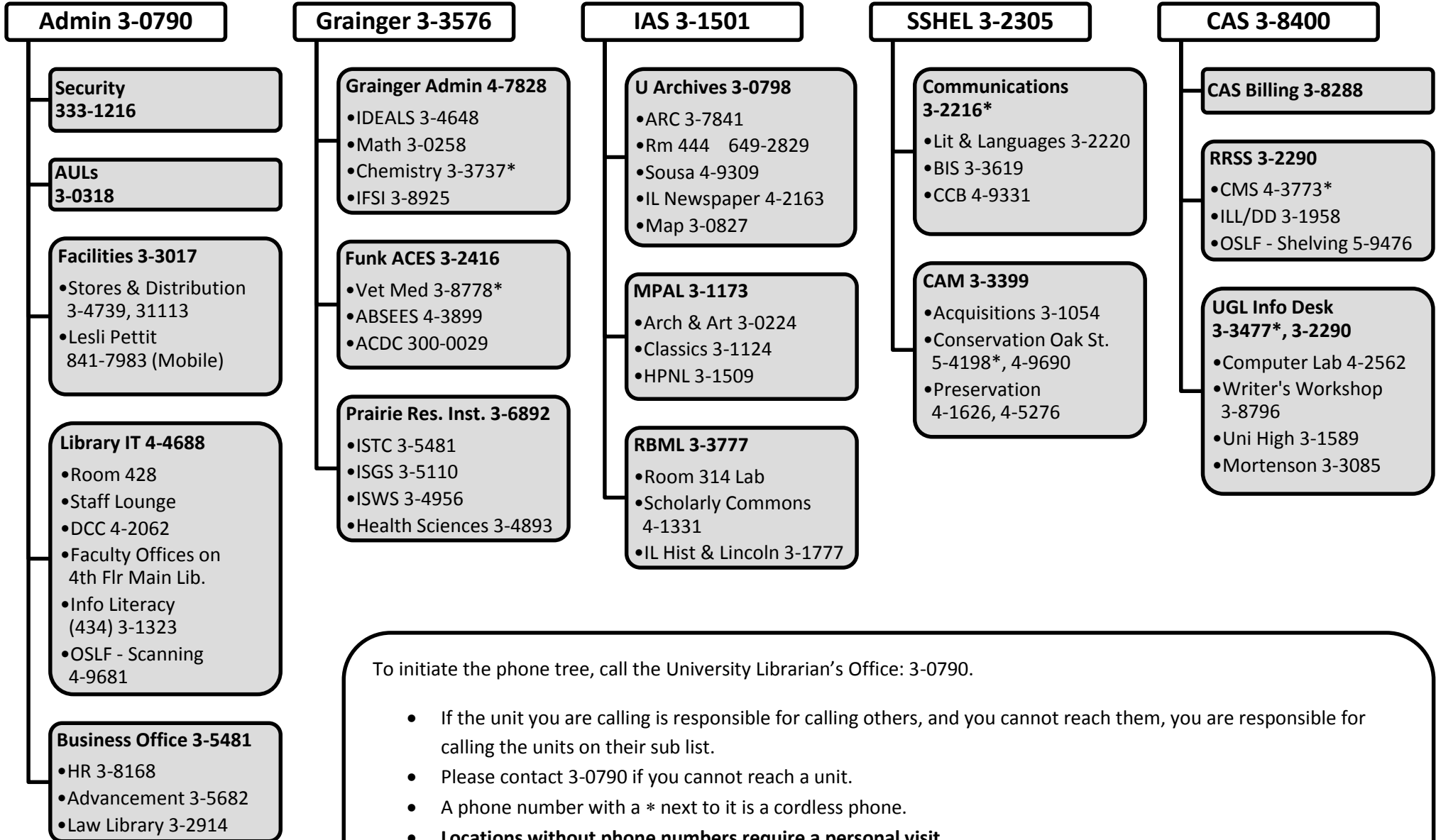


# University Library Telephone Information Tree

To initiate the phone tree, call the University Librarian's Office **3-0790**. The Librarian's Office will contact the top 5 units.

Outside of normal business hours notify **PRIMARY LIBRARY CONTACTS** on the **EMERGENCY CONTACT LIST**, link below:

<http://www.library.illinois.edu/administration/facilities/emergency.html>



To initiate the phone tree, call the University Librarian's Office: 3-0790.

- If the unit you are calling is responsible for calling others, and you cannot reach them, you are responsible for calling the units on their sub list.
- Please contact 3-0790 if you cannot reach a unit.
- A phone number with a \* next to it is a cordless phone.
- **Locations without phone numbers require a personal visit.**